



**MOUNTS  
SCREEN JUST  
15MM FROM  
THE WALL**

# BT7521

## ULTRA-SLIM FLAT SCREEN WALL MOUNT

Designed to mount small/medium sized flat screens, the BT7521 is an ultra-slim fixed wall mount that is easy to install and can mount screens up to 25kg. The wall plate features 'OWLS' on wall levelling system to ensure a straight and smart installation and comes supplied with security screws to help prevent unauthorized removal of the screen. The BT7521 is also compatible with B-Tech's range of poles and collars, increasing the number of different ways it can be mounted, ideal for commercial applications as well as home installations.

### SPECIFICATION

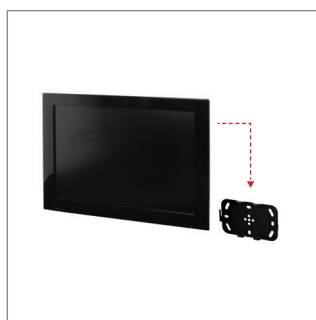
Recommended screen size	up to 32"
Max load	25kg
VESA® compatibility	up to 200 x 100
Distance from wall	15mm
Colour	Black

### FEATURES

- Fits screens with VESA mounting patterns: 75 x 75mm, 100 x 100mm and 200 x 100mm
- Features 'OWLS' On Wall Levelling System
- Compatible with B-Tech System 2 professional range
- Security locking screws and Allen key provided
- Simple 'hook-on' installation with all mounting hardware included



Mount screen 15mm from wall



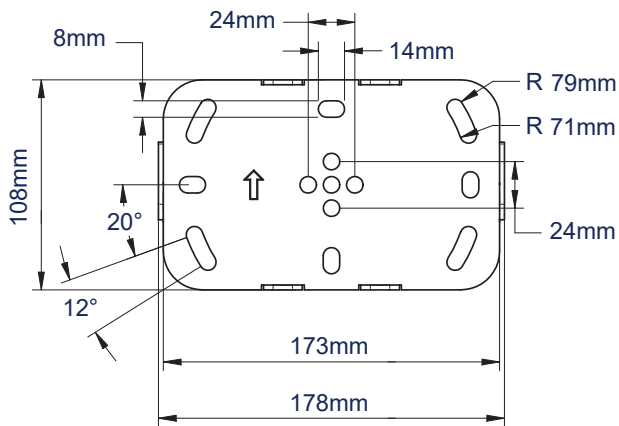
Easy hook-on installation



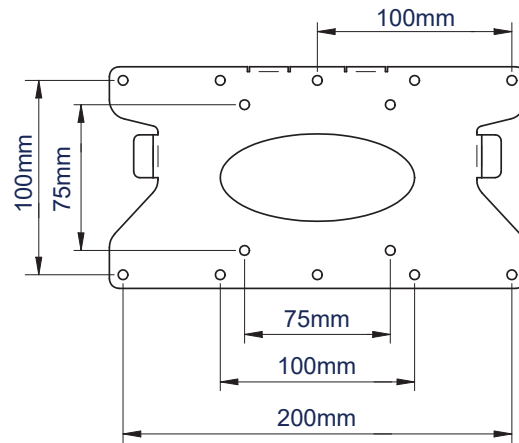
Security locking screws provided



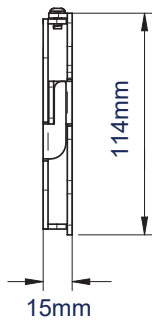
Compatible with B-Tech's professional range of poles and collars



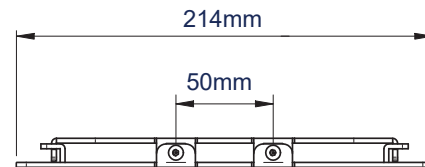
WALL PLATE - FRONT VIEW



INTERFACE PLATE - FRONT VIEW



WALL PLATE & INTERFACE PLATE - SIDE VIEW



WALL PLATE & INTERFACE PLATE - TOP VIEW

#### PACKING INFORMATION

COLOUR:	ORDER REF:	EAN CODE:	MASTER CARTON QTY:	INNER CARTON QTY:	MASTER CARTON WEIGHT:	MASTER CARTON CUBE:
Black	BT7521/B	5019318752217	8	2	8.62kg	0.024cbm

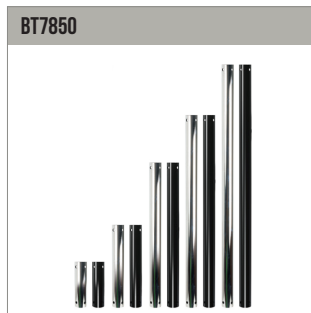
#### RELATED PRODUCTS AND ACCESSORIES OF THE BT7521



**Flat Screen Wall Mount with Tilt** VESA patterns up to 200 x 100mm



**Heavy Duty Floor / Ceiling Mount**  
Can be used in conjunction with B-Tech poles and collars to create pole mounted solutions



**Ø50mm Poles** available in different lengths up to 3m



**Accessory Collars** attaches the mount to Ø50mm poles