

Twin Screen Video Conferencing Stand with Camera Shelf

BT8521

Twin Screen Video Conferencing Stand with Camera Shelf

**Heavy duty stylish flat screen stand
suitable for holding two screens up to
42" (107cm) / 35kg (77lbs) per screen**

- Fits screens with mounting patterns up to:
H: 825mm (32.5") x **V:** 500mm (19.5") including screens
using VESA® fixings up to 800 x 400mm
- Universal Camera Shelf included
- Includes universal flat screen Interface Kit
- Can be used free standing or bolted to the floor
- Supplied with optional rubber feet for use
when free standing
- Available in 3 colour options:
Black Base with Black Poles, Black Base with Chrome
Poles and Silver Base with Chrome Poles



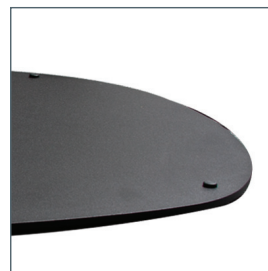
Per Screen



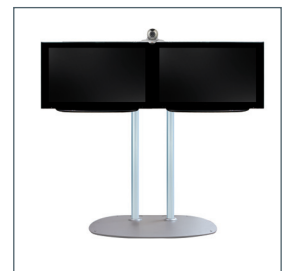
Integrated cable management to
hide unsightly cables



Tempered Glass Shelf and Bracket
(BT7163) also available

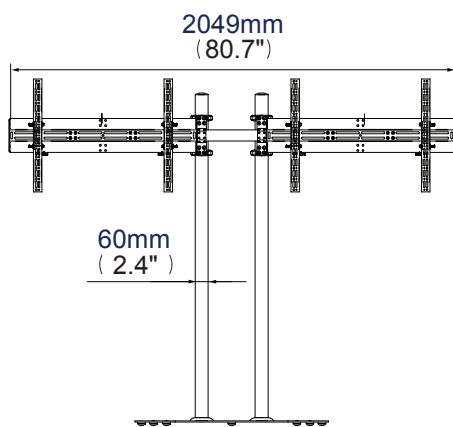


Can be used free standing or
bolted to the floor

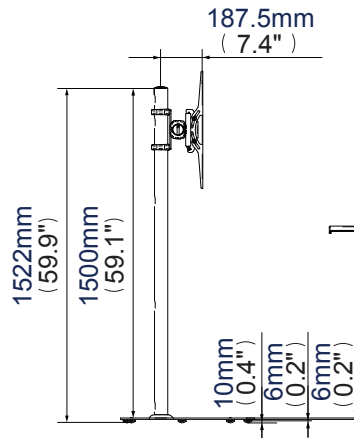


Available in 3 separate colour
combinations

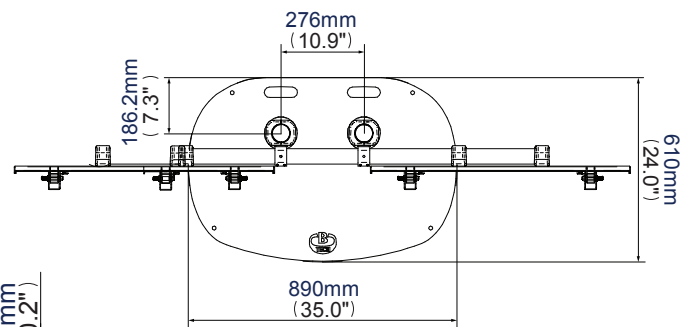
Twin Screen Video Conferencing Stand with Camera Shelf



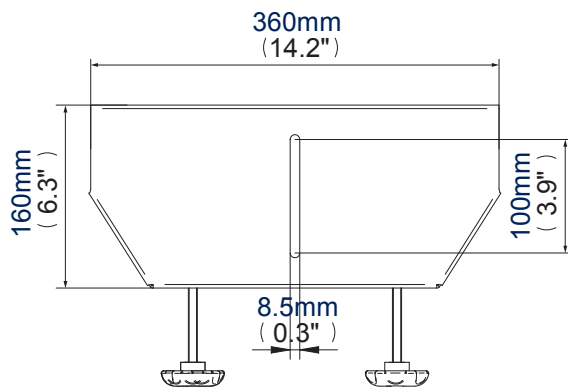
Front View



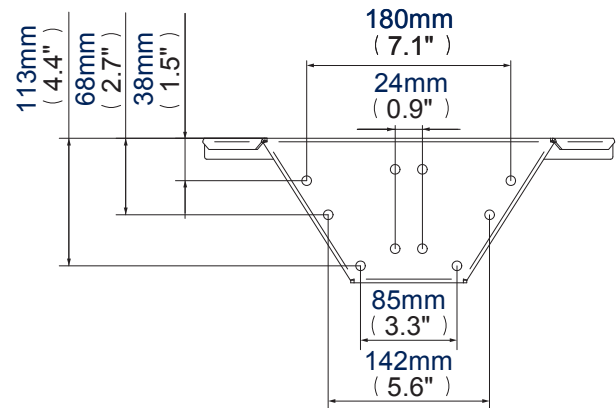
Side View



Top View



Top View
Camera Shelf



Back View
Camera Shelf

Colour:	Order Ref:	EAN Code:
Black Base & Back Poles	BT8521/BB	5019318089282
Black Base & Chrome Poles	BT8521/BC	5019318089299

**This information is intended as a guide only and reflects the current specification at the time of print.
B-Tech accepts no liability for the accuracy of the information contained in this document.**