



# BTV 1 1 4

SMALL FLAT SCREEN WALL MOUNT  
WITH DOUBLE ARM

## INSTALLATION GUIDE & PARTS LIST

This Pack Contains 1 Mount

Ventry™  
range



- Wall mount designed for screens up to 23" (58cm) / 15kg (33lbs)
- Features 180° swivel and  $\pm 15^\circ$  tilt
- 360° rotation for easy screen levelling
- Double articulated arm for optimum screen positioning, extends up to 385mm from wall
- Quick and simple installation
- Integrated spirit level and cable management
- All necessary fixings and mounting hardware included
- Mounts VESA® patterns: 100mm x 100mm and 75mm x 75mm

Crosshead  
screwdriver



Drill



Pencil



8mm (5/16") masonry bit  
or 3mm (1/8") wood bit



Stud finder  
(optional)



### B-TECH AUDIO VIDEO MOUNTS

**HEAD OFFICE**  
Bennett House, Long March, Daventry, Northants., NN11 4NR, UK  
Email: [info@btechavmounts.co.uk](mailto:info@btechavmounts.co.uk)

#### EUROPE

**GERMANY**  
Dyotzer Weg 26A, 14612 Falkensee,  
Berlin, Germany  
Email: [info@btechdeutschland.de](mailto:info@btechdeutschland.de)

**NORTH AMERICA**  
203 Eggert Road,  
Buffalo, NY 14215, USA  
Email: [info@btechavmounts.com](mailto:info@btechavmounts.com)

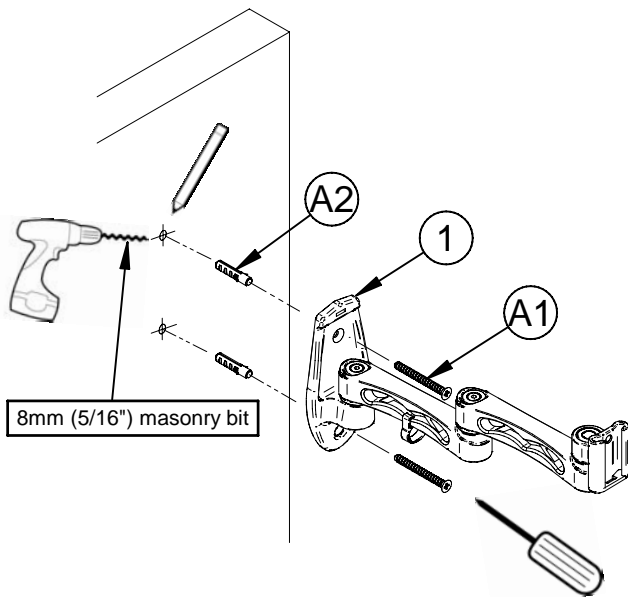
**SINGAPORE**  
Ruby Industrial Complex,  
Singapore 347740  
Email: [info@btechavmounts.com.sg](mailto:info@btechavmounts.com.sg)

**ASIA PACIFIC**  
Unit 1109 Prosperity Millennia Plaza,  
Quarry Bay, Hong Kong  
Email: [info@btechavmounts.com.hk](mailto:info@btechavmounts.com.hk)

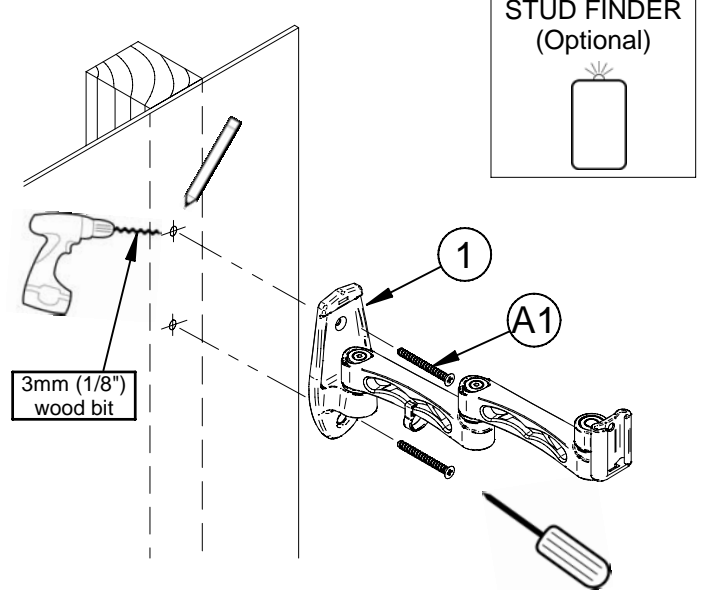
IP-BTV114-V1-VT1BX-021211-32 MADE IN CHINA

### 1. Attach wall plate to either a concrete / brick wall or wood / stud wall.

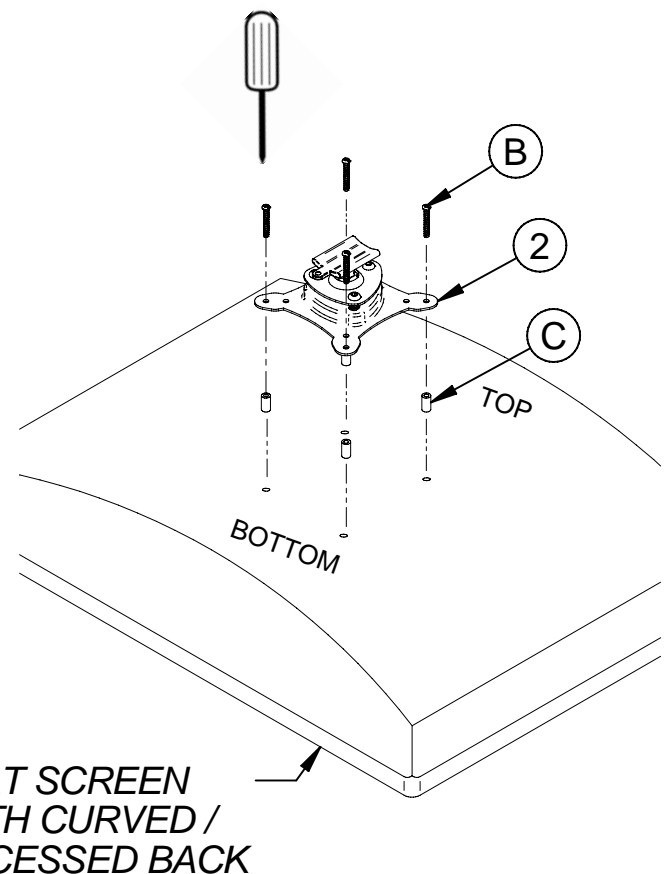
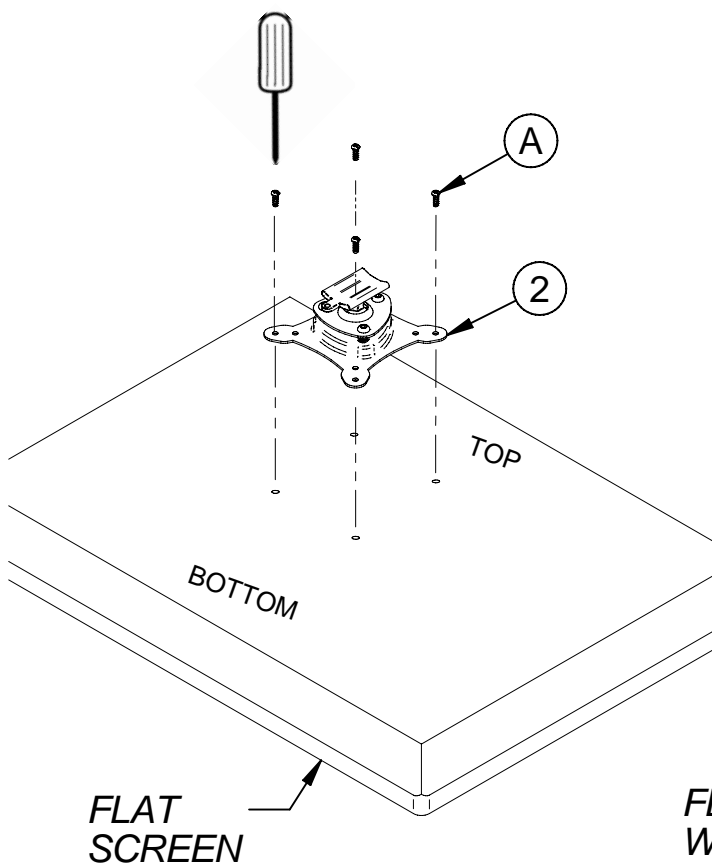
#### i. Concrete / brick wall.



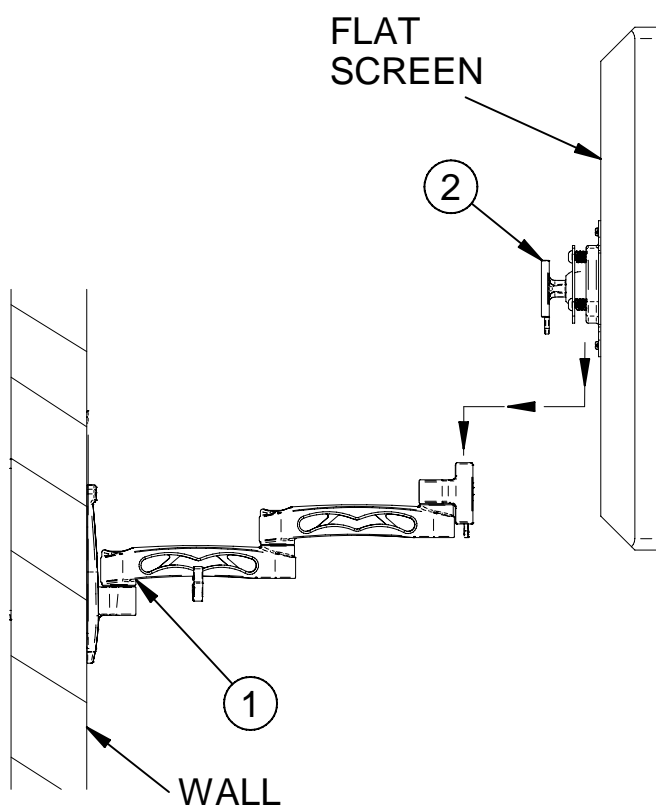
#### ii. Wood / stud wall.



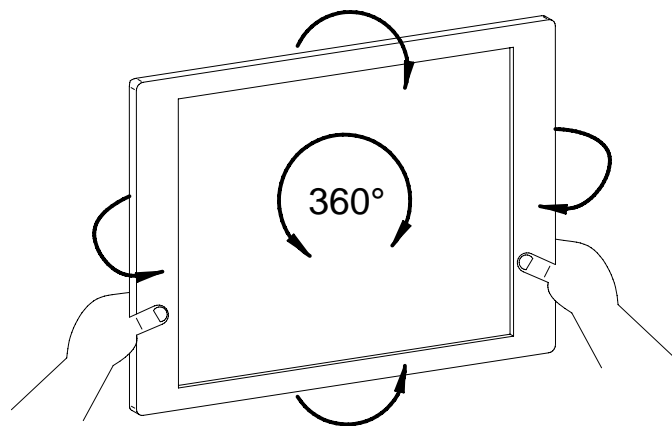
### 2. Attach interface plate.



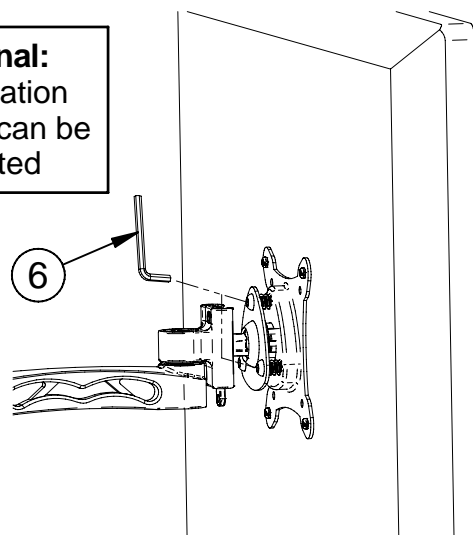
### 3. Hook interface onto wall arm.



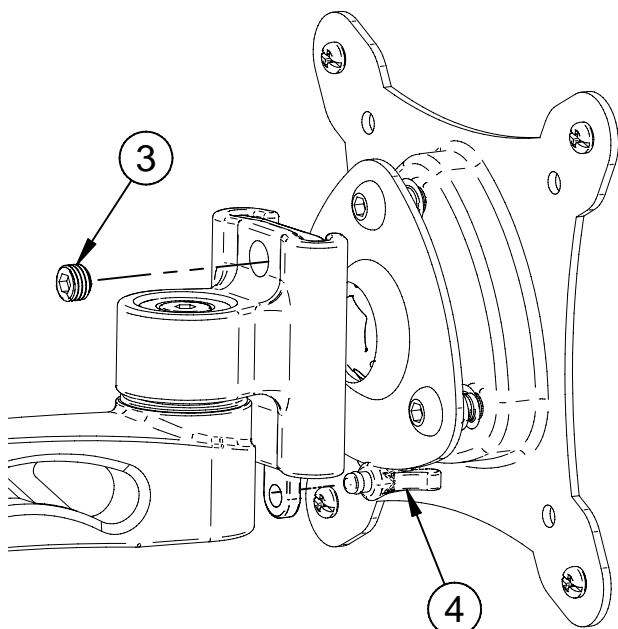
### 4. Adjust tilt angle / rotate screen.



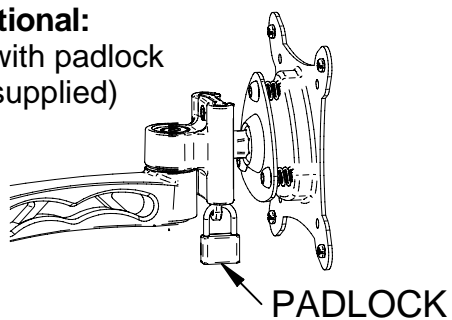
**Optional:**  
Tilt / rotation  
stiffness can be  
adjusted



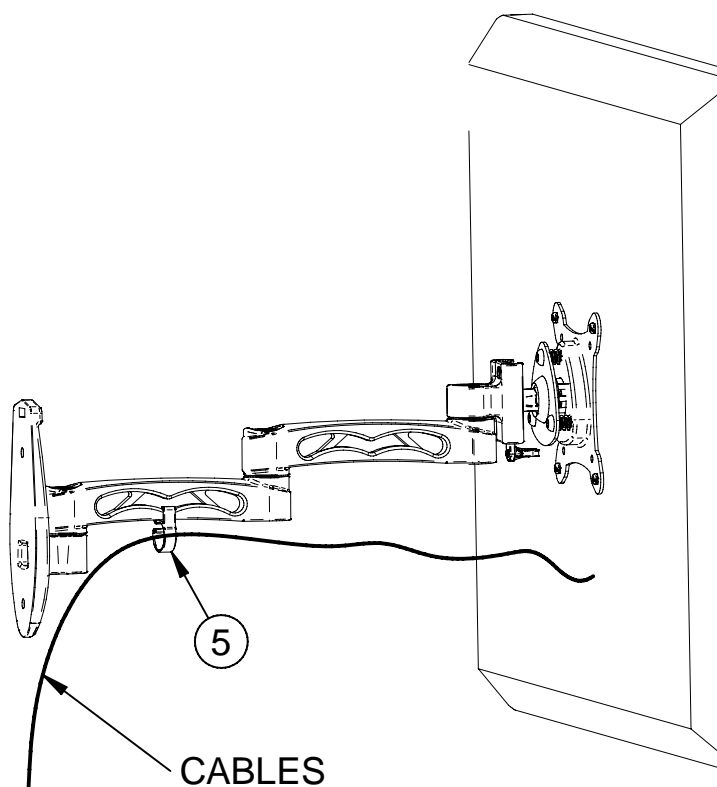
### 5. Secure the mount.

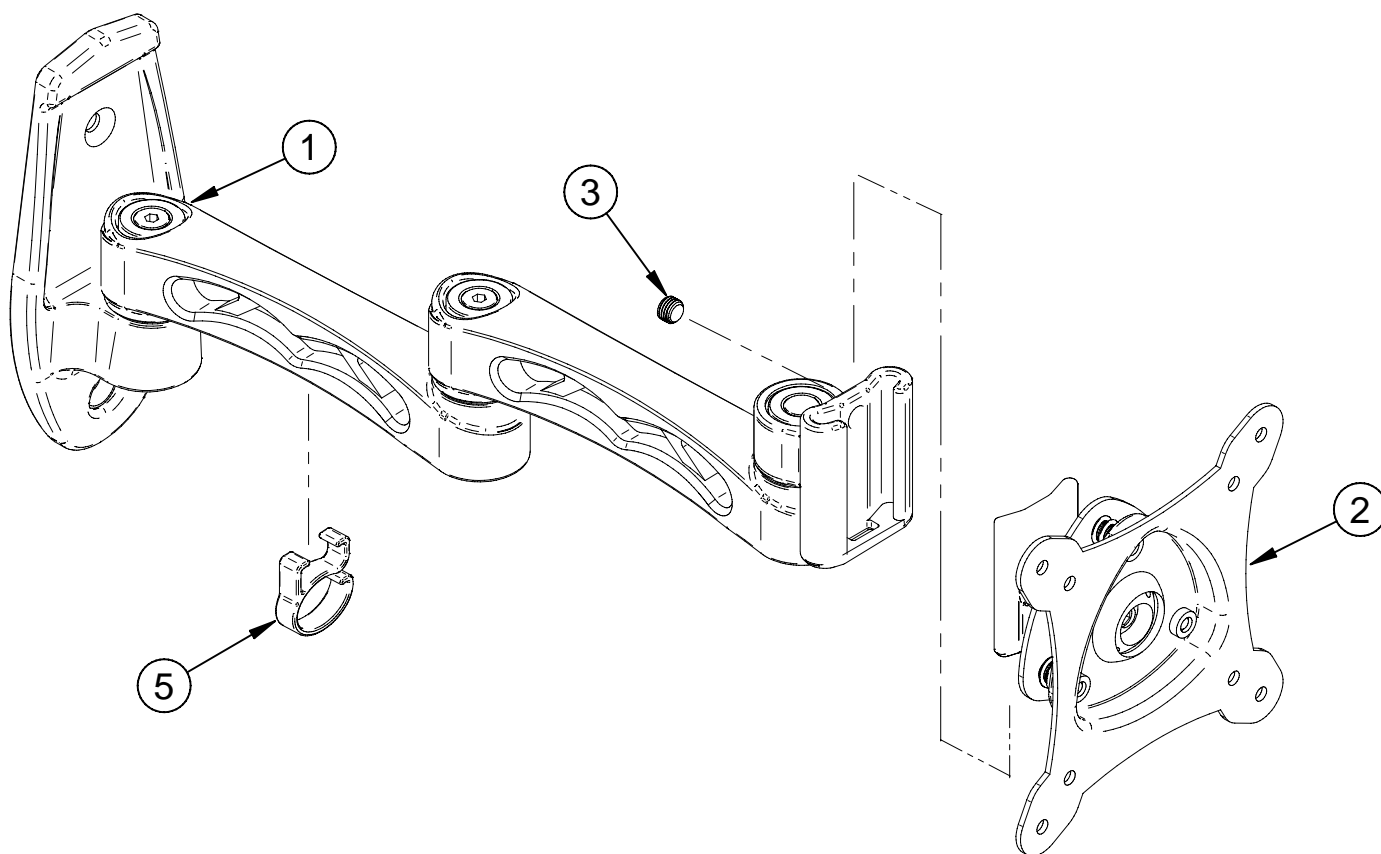


**Optional:**  
Secure with padlock  
(not supplied)

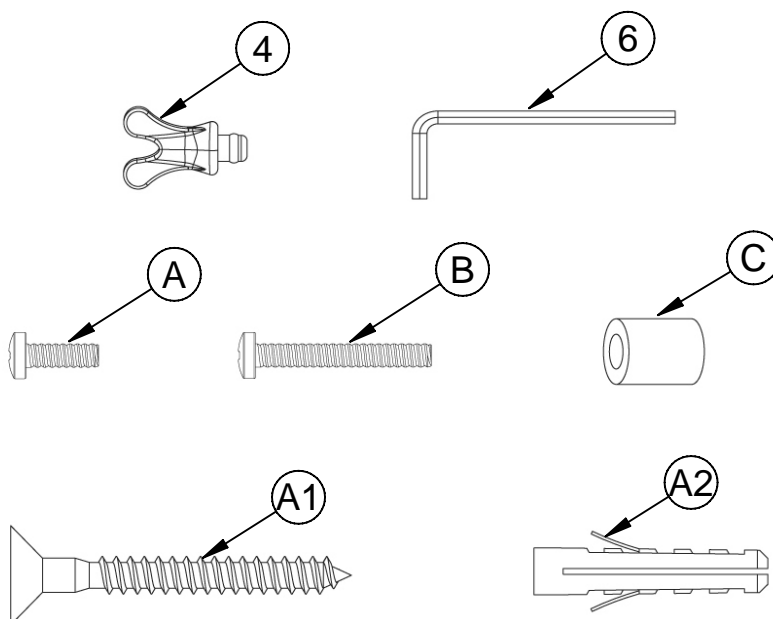


### 6. Cable management.





REF	PART NAME	QTY
1	WALL ARM	1
2	INTERFACE	1
3	GRUB SCREW	1
4	PLASTIC STOPPER	1
5	CABLE MANAGEMENT CLIP	1
6	HEX KEY	1
<b>INTERFACE KIT</b>		
A	M4 x 12mm SCREW	4
B	M4 x 30mm SCREW	4
C	SPACER (FOR PART B)	4
<b>FIXING KIT</b>		
A1	WOOD SCREW	2
A2	WALL PLUG (FOR PART A1)	2



Suitable for loads up to 15Kg (33lbs)